

Hampshire Water Transfer and Water Recycling Project

Environmental Statement – Figure 4.8 Key design refinements implemented at Stage 6

VOLUME NUMBER: 6

PLANNING INSPECTORATE SCHEME NUMBER: WA010002

APPLICATION DOCUMENT REFERENCE: 6.3

APFP REGULATION: 5(2)(a)

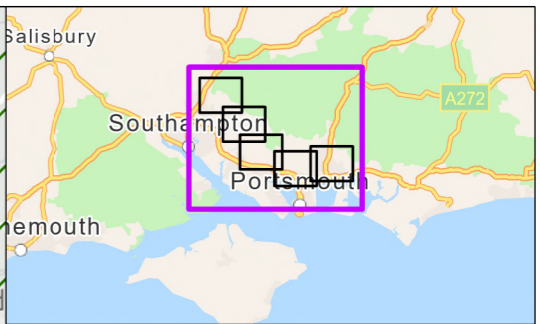
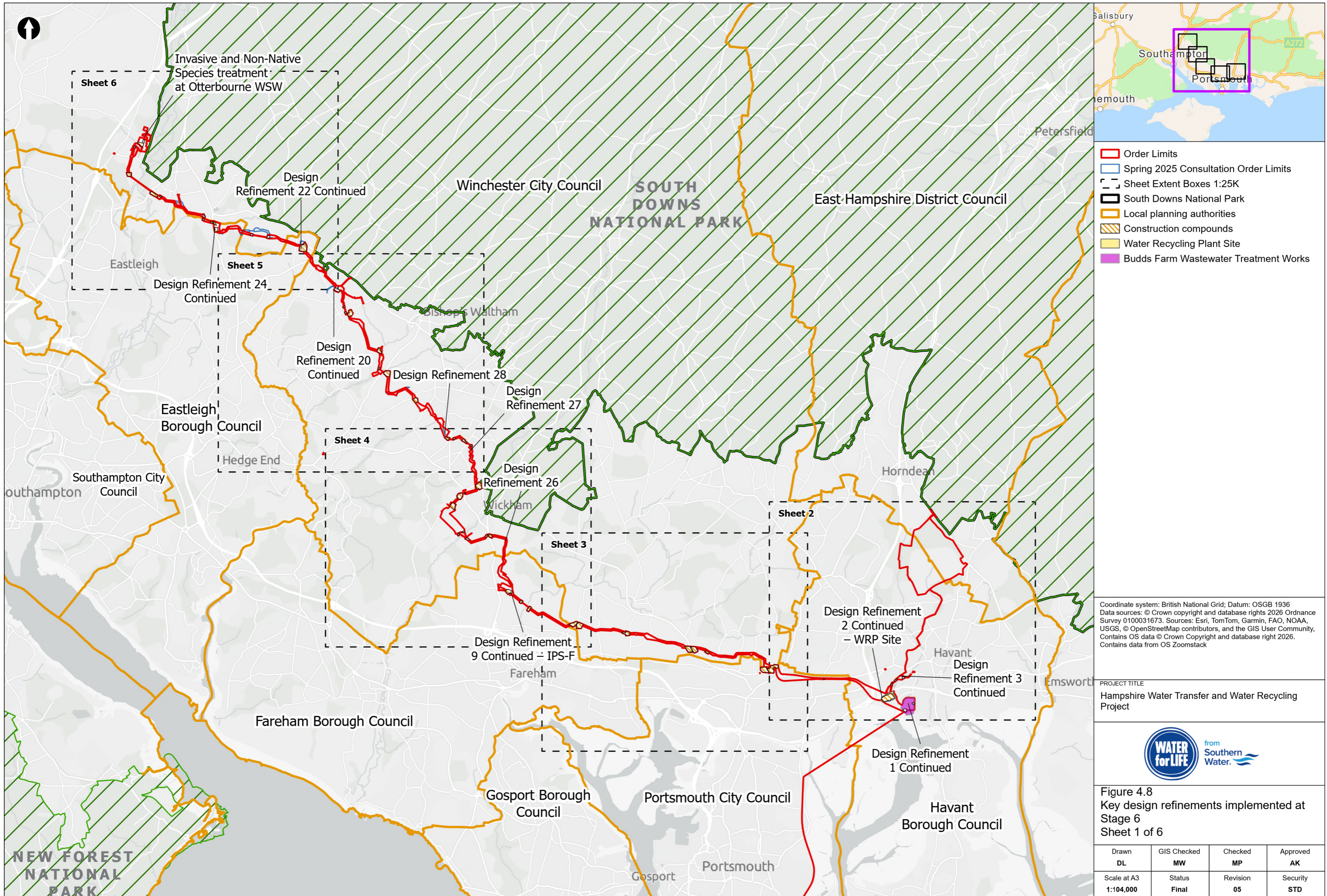
May 2026

Version 0



from
**Southern
Water** 

The Southern Water logo consists of the words 'Southern' and 'Water' stacked vertically in a dark blue, sans-serif font. To the right of the word 'Water' is a graphic element consisting of three stylized, wavy lines in shades of blue, representing water.



- Order Limits
- Spring 2025 Consultation Order Limits
- Sheet Extent Boxes 1:25K
- South Downs National Park
- Local planning authorities
- Construction compounds
- Water Recycling Plant Site
- Budds Farm Wastewater Treatment Works

Coordinate system: British National Grid; Datum: OSGB 1936
 Data sources: © Crown copyright and database rights 2026 Ordnance Survey 0100031673. Sources: Esri, TomTom, Garmin, FAO, NOAA, USGS, © OpenStreetMap contributors, and the GIS User Community, Contains OS data © Crown Copyright and database right 2026. Contains data from OS Zoomstack

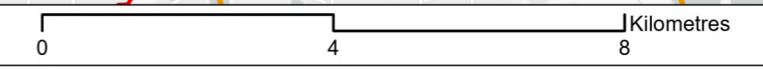
PROJECT TITLE
 Hampshire Water Transfer and Water Recycling Project

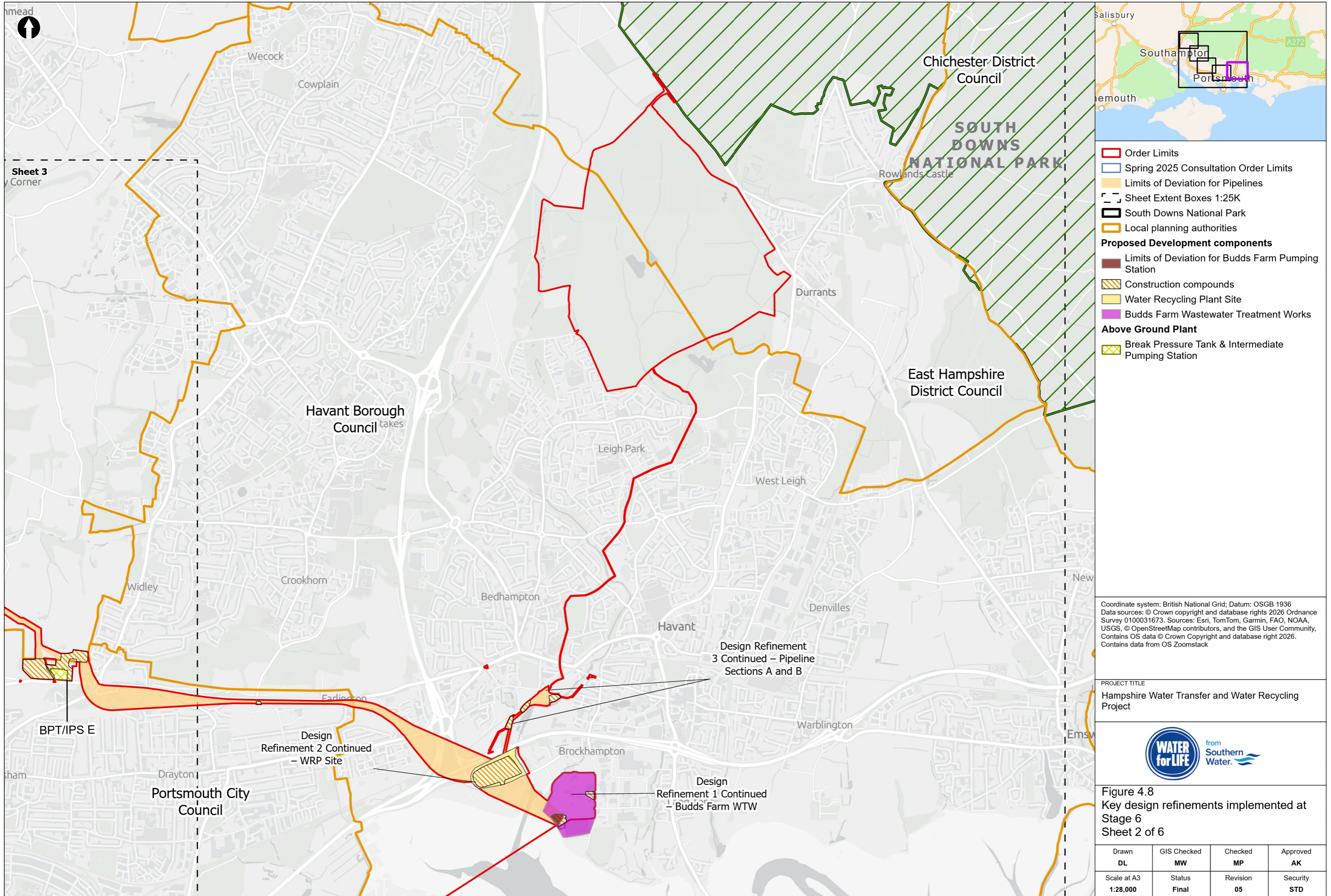


Figure 4.8
 Key design refinements implemented at Stage 6
 Sheet 1 of 6

Drawn DL	GIS Checked MW	Checked MP	Approved AK
Scale at A3 1:104,000	Status Final	Revision 05	Security STD

Drawing Number
PC5223-RHD-ES-ZZ-D-Z-0158





- Order Limits
 - Spring 2025 Consultation Order Limits
 - Limits of Deviation for Pipelines
 - Sheet Extent Boxes 1:25K
 - South Downs National Park
 - Local planning authorities
- Proposed Development components**
- Limits of Deviation for Budds Farm Pumping Station
 - Construction compounds
 - Water Recycling Plant Site
 - Budds Farm Wastewater Treatment Works
- Above Ground Plant**
- Break Pressure Tank & Intermediate Pumping Station

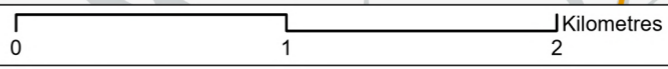
Coordinate system: British National Grid; Datum: OSGB 1936
 Data sources: © Crown copyright and database rights 2026 Ordnance Survey 0100031673. Sources: Esri, TomTom, Garmin, FAO, NOAA, USGS, © OpenStreetMap contributors, and the GIS User Community, Contains OS data © Crown Copyright and database right 2026. Contains data from OS Zoomstack

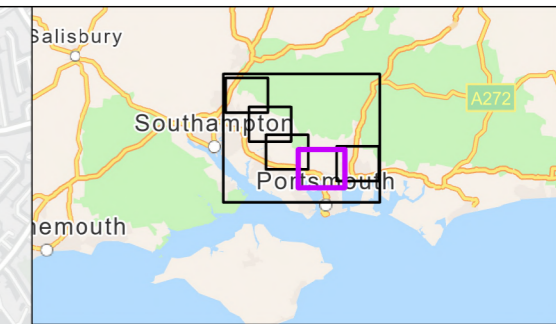
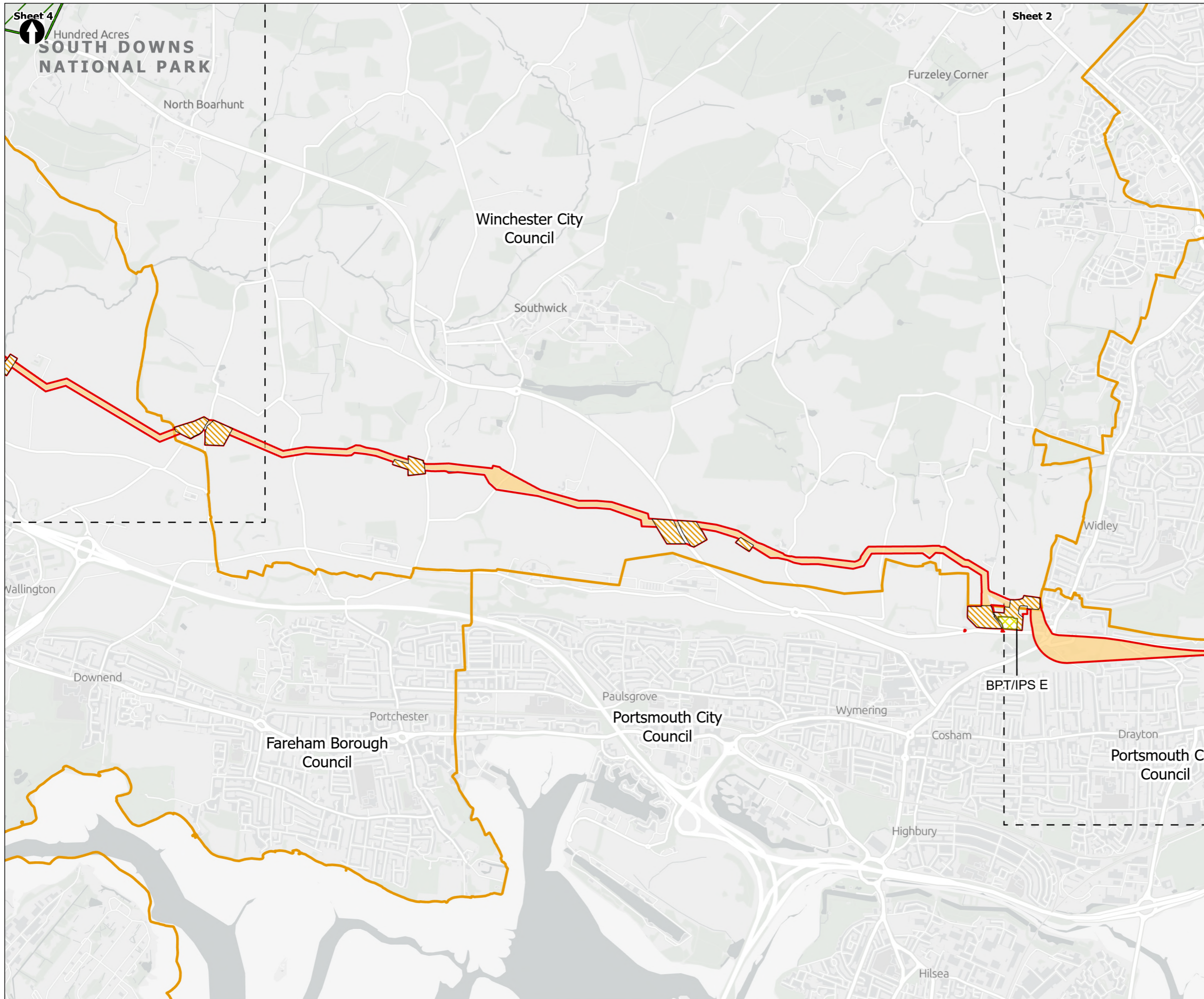
PROJECT TITLE
 Hampshire Water Transfer and Water Recycling Project



Figure 4.8
 Key design refinements implemented at Stage 6
 Sheet 2 of 6

Drawn DL	GIS Checked MW	Checked MP	Approved AK
Scale at A3 1:28,000	Status Final	Revision 05	Security STD





- Order Limits
- Spring 2025 Consultation Order Limits
- Limits of Deviation for Pipelines
- Sheet Extent Boxes 1:25K
- South Downs National Park
- Local planning authorities
- Construction compounds
- Above Ground Plant**
- Break Pressure Tank & Intermediate Pumping Station

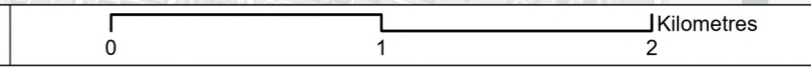
Coordinate system: British National Grid; Datum: OSGB 1936
 Data sources: © Crown copyright and database rights 2026 Ordnance Survey 0100031673. Sources: Esri, TomTom, Garmin, FAO, NOAA, USGS, © OpenStreetMap contributors, and the GIS User Community, Contains OS data © Crown Copyright and database right 2026. Contains data from OS Zoomstack

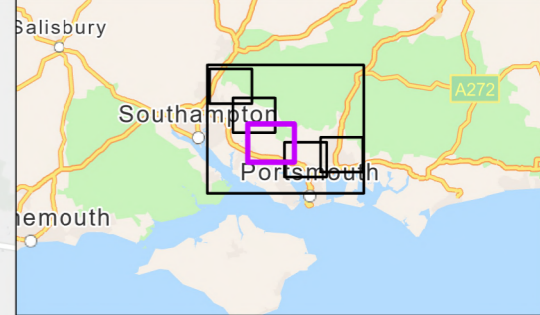
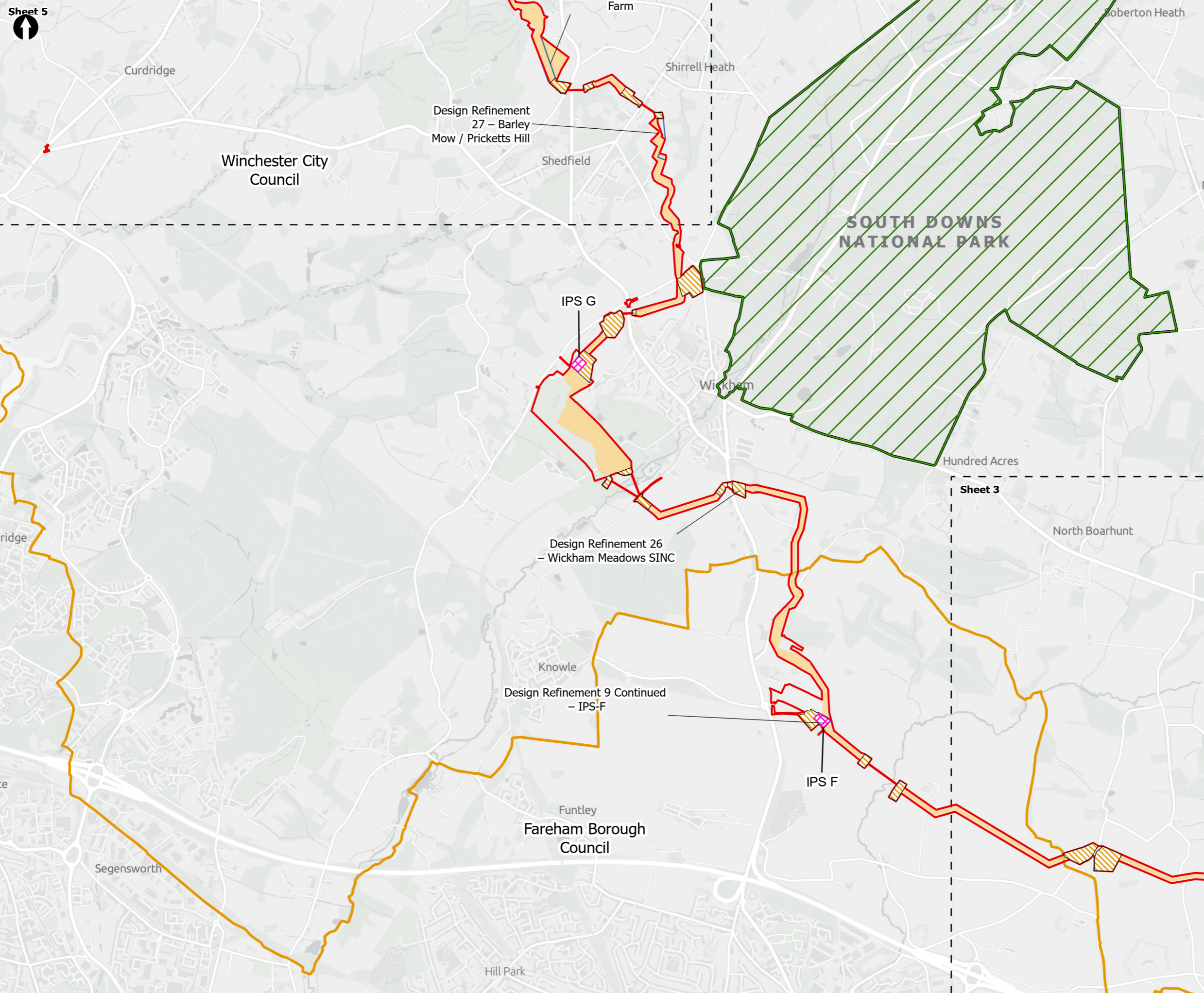
PROJECT TITLE
 Hampshire Water Transfer and Water Recycling Project



Figure 4.8
 Key design refinements implemented at Stage 6
 Sheet 3 of 6

Drawn DL	GIS Checked MW	Checked MP	Approved AK
Scale at A3 1:28,000	Status Final	Revision 05	Security STD





- Order Limits
- Spring 2025 Consultation Order Limits
- Limits of Deviation for Pipelines
- Sheet Extent Boxes 1:25K
- South Downs National Park
- Local planning authorities
- Construction compounds
- Above Ground Plant**
- Intermediate Pumping Station

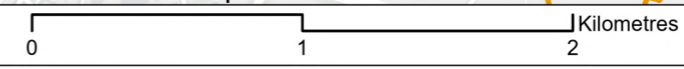
Coordinate system: British National Grid; Datum: OSGB 1936
 Data sources: © Crown copyright and database rights 2026 Ordnance Survey 0100031673. Sources: Esri, TomTom, Garmin, FAO, NOAA, USGS, © OpenStreetMap contributors, and the GIS User Community, Contains OS data © Crown Copyright and database right 2026. Contains data from OS Zoomstack

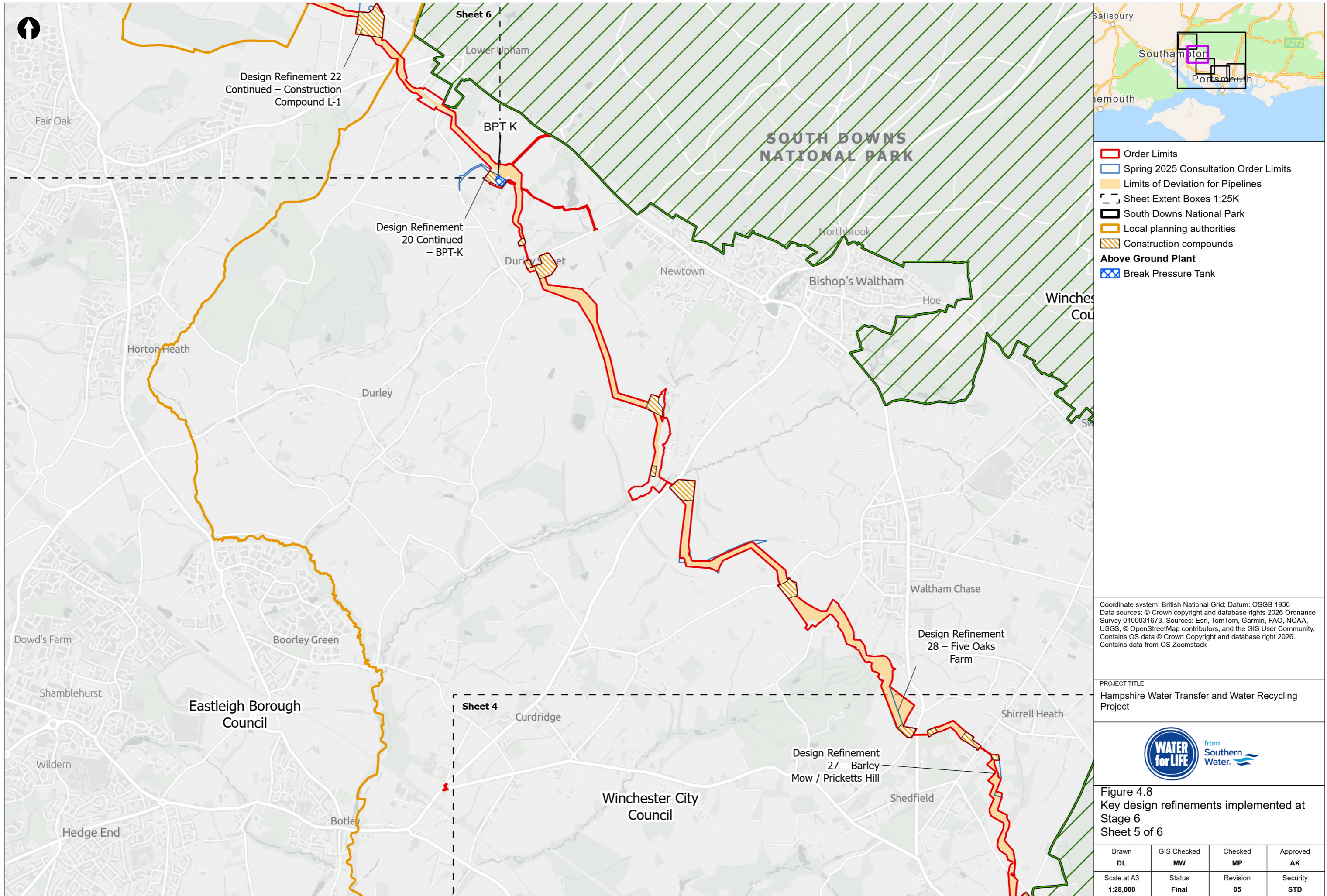
PROJECT TITLE
 Hampshire Water Transfer and Water Recycling Project



Figure 4.8
 Key design refinements implemented at Stage 6
 Sheet 4 of 6

Drawn DL	GIS Checked MW	Checked MP	Approved AK
Scale at A3 1:28,000	Status Final	Revision 05	Security STD





- Order Limits
- Spring 2025 Consultation Order Limits
- Limits of Deviation for Pipelines
- Sheet Extent Boxes 1:25K
- South Downs National Park
- Local planning authorities
- Construction compounds
- Above Ground Plant**
- Break Pressure Tank

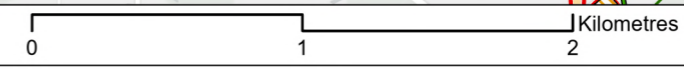
Coordinate system: British National Grid; Datum: OSGB 1936
 Data sources: © Crown copyright and database rights 2026 Ordnance Survey 0100031673. Sources: Esri, TomTom, Garmin, FAO, NOAA, USGS, © OpenStreetMap contributors, and the GIS User Community, Contains OS data © Crown Copyright and database right 2026. Contains data from OS Zoomstack

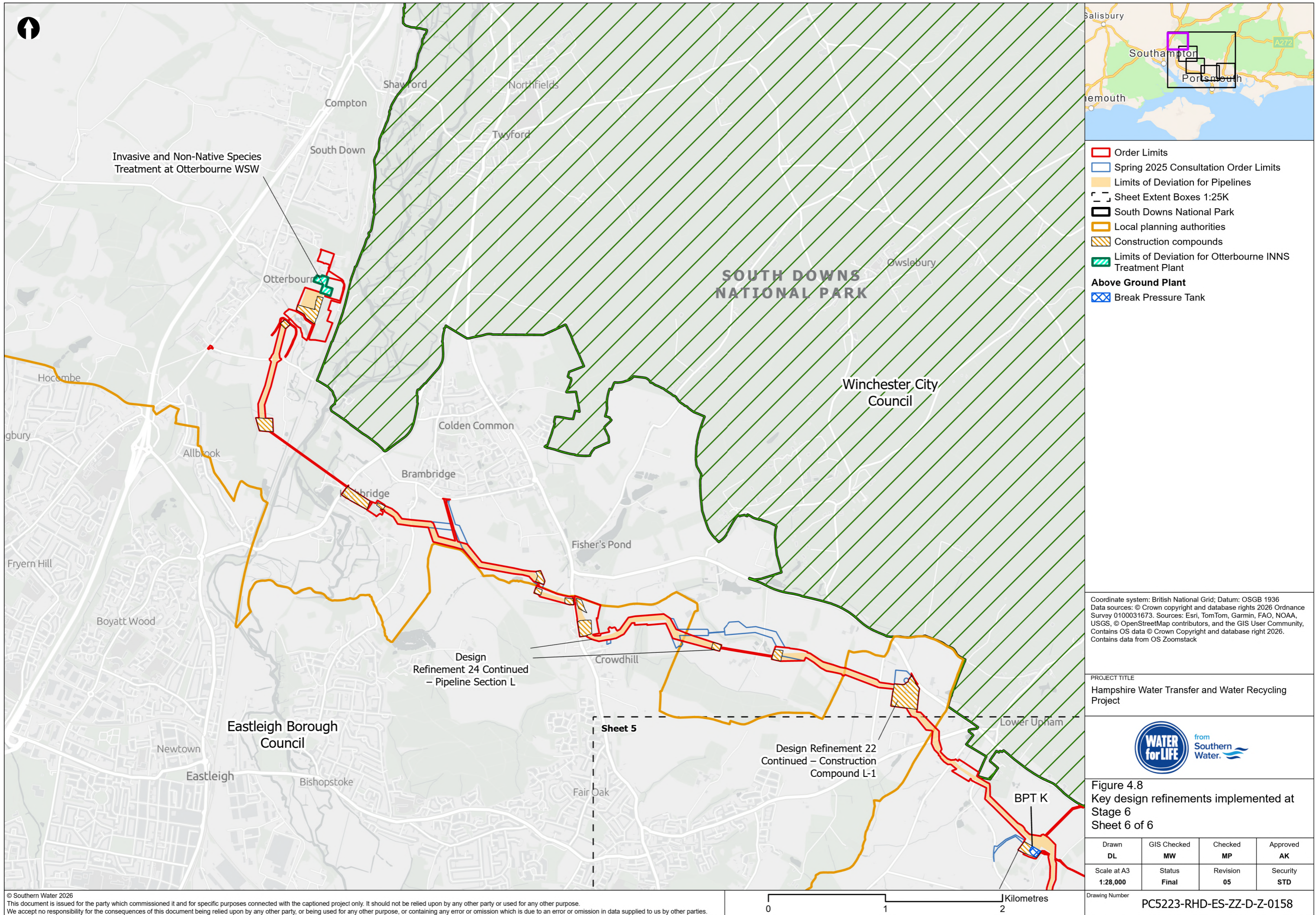
PROJECT TITLE
 Hampshire Water Transfer and Water Recycling Project



Figure 4.8
 Key design refinements implemented at Stage 6
 Sheet 5 of 6

Drawn DL	GIS Checked MW	Checked MP	Approved AK
Scale at A3 1:28,000	Status Final	Revision 05	Security STD





- Order Limits
- Spring 2025 Consultation Order Limits
- Limits of Deviation for Pipelines
- Sheet Extent Boxes 1:25K
- South Downs National Park
- Local planning authorities
- Construction compounds
- Limits of Deviation for Otterbourne INNS Treatment Plant
- Above Ground Plant**
- Break Pressure Tank

Coordinate system: British National Grid; Datum: OSGB 1936
 Data sources: © Crown copyright and database rights 2026 Ordnance Survey 0100031673. Sources: Esri, TomTom, Garmin, FAO, NOAA, USGS, © OpenStreetMap contributors, and the GIS User Community, Contains OS data © Crown Copyright and database right 2026. Contains data from OS Zoomstack

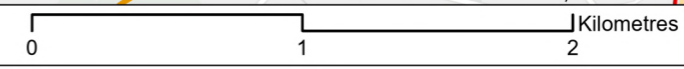
PROJECT TITLE
 Hampshire Water Transfer and Water Recycling Project



Figure 4.8
 Key design refinements implemented at Stage 6
 Sheet 6 of 6

Drawn DL	GIS Checked MW	Checked MP	Approved AK
Scale at A3 1:28,000	Status Final	Revision 05	Security STD

© Southern Water 2026
 This document is issued for the party which commissioned it and for specific purposes connected with the captioned project only. It should not be relied upon by any other party or used for any other purpose. We accept no responsibility for the consequences of this document being relied upon by any other party, or being used for any other purpose, or containing any error or omission which is due to an error or omission in data supplied to us by other parties.



Drawing Number
PC5223-RHD-ES-ZZ-D-Z-0158